

Immaculate Barge with Scenic Residential Mooring near Windsor £195,000



JOSEPHINE

Piper Boats Dutch Barge style cruising Live-aboard Vessel

For Sale 

RIVERCATION
rivercation.com
07860 23 55 44

A beautifully maintained live-aboard barge in a peaceful riverside setting, ideal for full-time living. Josephine is an exceptional Dutch Barge, offering the rare combination of elegant living and a fully residential mooring with uninterrupted views of the River Thames, moments from Windsor. Situated on a peaceful stretch of riverbank with stunning views, the spacious mooring includes all amenities and benefits from a maintained tree lined grassy area perfect for entertaining or quiet afternoons in the sun

Josephine

Sales Specification

Description

Josephine is a replica Dutch-style barge built by Piper Boats in 2009, designed as a live-aboard vessel with comfort, storage, and year-round practicality in mind. She has been cruised extensively on the Thames, Medway, East Coast, and Norfolk Broads, largely single-handed by her owner.

Highlights include:

- Rented residential mooring, Windsor area (transferable, small premium)
- VAT-qualifying ship for reduced maintenance costs
- Comfortable year-round living, modern insulation and heating
- Spacious living areas with full modern appliances
- Easy handling for solo cruising
- Excellent as both a permanent residence and a cruising vessel

Key Details:

- | | |
|-----------------------------|--------------------------------|
| • Make: Piper | • Location: Windsor, Berkshire |
| • Model: 55 | • Condition: Used excellent |
| • Year: 2009 | • Fuel Type: Diesel |
| • Length: 55 ft | • Max Speed: 9 kn |
| • Beam: 12 ft 6 inches | • Master Cabin: 1 |
| • Draught: 3 ft | • Guest Heads: 1 |
| • Air draught: 9ft 9 inches | • Price: £195,000 |



Accommodation

Galley

All modern and efficient appliances:

- Spinflo Caprice MKIII gas oven, grill & 4 burner hob (gas locker on deck 2x13 kg propane & bubble tester)
- Dometic extractor above.
- Miele WT2670 washer dryer.
- Large Vitrifrigo 24v fridge freezer.
- Eye-level cupboards all round with LED lighting under.
- Large under-sink corner cupboards with sliding storage racks.
- Four very large drawers to starboard for linen, pots/ pans etc.
- Spinflo Caprice MKIII gas oven, grill & 4 burner hob with Dometic extractor above.
- Miele WT2670 washer dryer. Large Vitrifrigo 24v fridge freezer.



Accommodation

Saloon

The living space below deck is spacious with plenty of light. a bespoke design with cupboards, drawers & shelves throughout. The finishes are luxurious and warm in oak & maple.

- 42" Samsung smart TV linked to WiFi, terrestrial aerial and automatic satellite dish.
- Harworth B1 diesel stove with removable coal effect tray
- 6'6" double radiator
- LED lighting overhead with discrete lighting under gunwales.
- Dedicated cupboard for large de-humidifier with permanent drain facility.
- Large opening double glazed skylight/roof box with interior insect screen/blind and exterior winter cover



Accommodation

Master Bedroom & Heads

Heads

- Jabsco 24v marine flushing toilet
- shower/hip bath, heated towel rail and basin unit, large mirror and cupboards

The master bedroom:

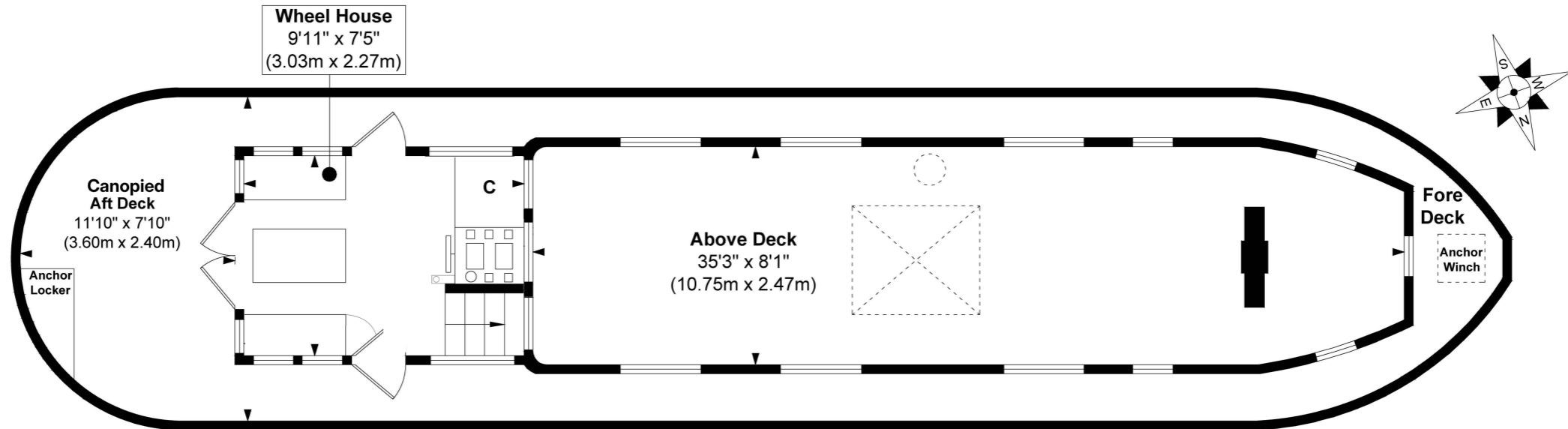
- double bed
- double wardrobe
- four drawer cabinet with TV/DVD over
- cupboards
- LED lighting and DAB radio (with remote)



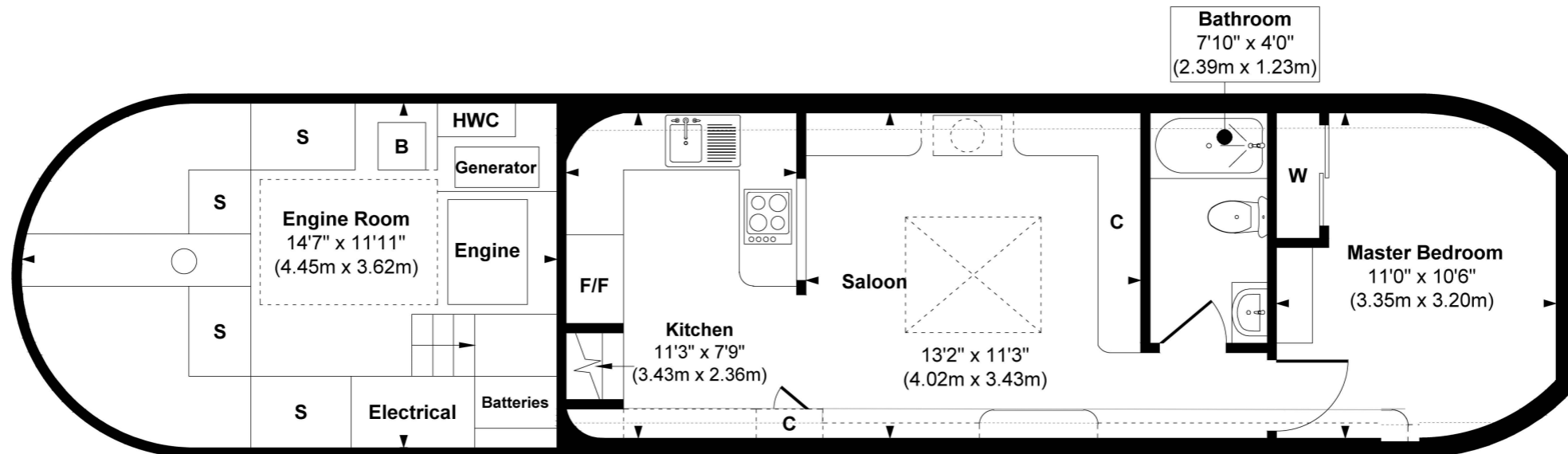
Floor Plan

Josephine, Windsor, Berkshire

LOA 16.77m Beam 3.82m



Upper Deck
Approximate Floor Area
406 sq. ft
(37.73 sq. m)



Lower Deck
Approximate Floor Area
586 sq. ft
(54.44 sq. m)

Approx. Gross Internal Floor Area 992 sq. ft / 92.17 sq. m

Illustration for identification purposes only, measurements are approximate, not to scale.

© RIVERCATION

Upper Level

Wheelhouse

Attractive helm position with a comprehensive range of navigation equipment, chart table etc.

- Double glazed all round.
- Front screen folds down on gas assist struts.
- Stable doors to side and rear decks.
- Two double bench seats provide seating for four, a spacious locker and convenient access to the engine room.
- The large folding table opens and lowers to make a guest double bed when required.
- The wheelhouse can be folded down when required.
- The roof is removable in five manageable sections each with an internal core of foam insulation.



Fore & aft deck

Fore & Aft Decks

Aft Deck

- Full width rear canopy on stainless steel tubular frame. Accessed via the wheelhouse double doors or side decks
- Seating space for four. Inset sockets for 'Fiamma' table legs.
- Deck locker containing rear anchor winch chain, mooring pins, cleaning equipment
- Heavy duty davits with adjustable trapeze style lift arrangement to suit any dinghy. 12v socket.

Fore Deck

- Deck locker housing anchor chain and winch control.
- Water tank with large access panel
- Lofrans Falcon 24v anchor winch





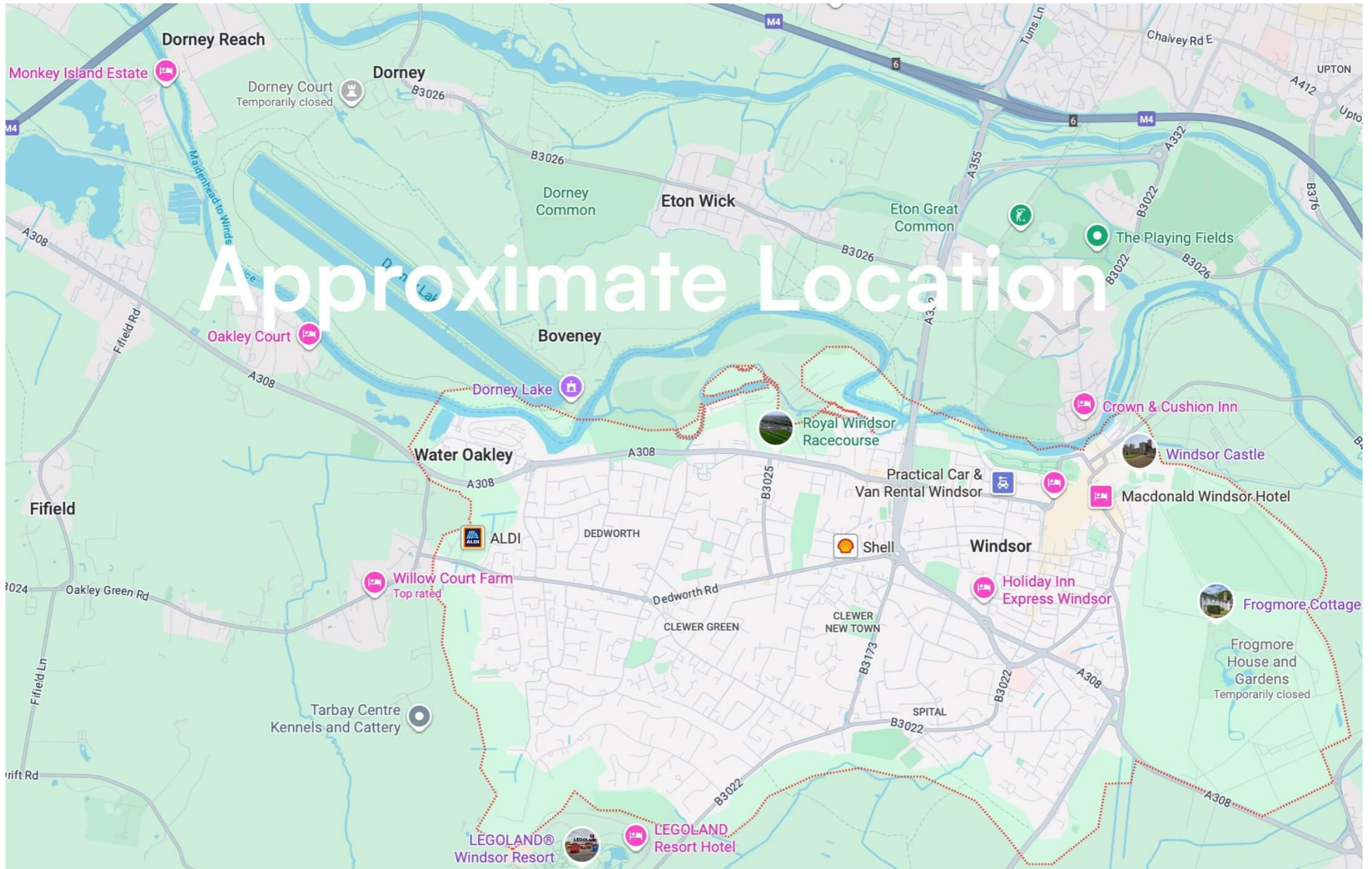
Contact Information

Agent - Simon Lewis | Rivercation Sales

Tel: +44 (0)7860 235544 (WhatsApp available)

Email: info@rivercation.com

Location near Windsor



The engine room is generously proportioned, well-lit, and designed for practicality, with clear access to all key systems requiring regular maintenance. Entry is via a set of steps beneath the starboard-side bench seat in the wheelhouse, providing a convenient and discreet access point. Inside, the layout ensures that the engine, central heating boiler, hot water calorifier, generator, batteries, and chargers are all easily reached for inspection or servicing. Thoughtful design also provides multiple dedicated storage areas, keeping the space organised and efficient.

Josephine

Technical Specification

Navigation Equipment

The navigation equipment is centrally located and well laid out. the steering and throttle are ideally located for comfort and all round visibility

Helm:

- Beta Marine 2C Deluxe engine control panel (voltmeter replaced)
- Raymarine Hybrid Touch e95 touch screen plotter
- Raymarine AIS 500 class B AIS transceiver (displays on e95 plotter)
- Standard Horizon Explorer GX1600E VHF DSC radio (linked to AIS)
- Nasa Marine Clipper Easy Navtex
- KVH Azimuth digital compass (also displays on e95 [requires swinging])
- Raymarine Autohelm ST60+ depth indicator
- Raymarine Autohelm ST60+ rudder indicator
- Anchor winch control
- Thruster control & volt meter
- Blue Sea Systems 8 way DC switch/fuse panel
- 6 owner fitted switches (all clearly marked)



Wiper & screen-wash controls

General Navigation:

- 50kg Halls anchor on 50 metres of chain
- Lofrans Falcon 24v winch (controls at helm/front deck)
- 35kg rear anchor on 50 metres of chain
- Lofrans Royal winch for rear anchor (rear deck locker)
- Vetus 160kgf 24v bow thruster with helm control and remote on lanyard
- LED navigation, anchor and deck lights

Engine Room Systems



The Engine Room is Spacious and well lit with easy access to everything requiring regular maintenance. Access is via stairs under the starboard side bench seat in the wheelhouse.

Engine: Beta 90 (Kubota based), keel cooled, naturally aspirated, 2400hrs use. Dual fuel filter system with manual changeover. Linked via isolator to the generator start battery. Comprehensive service log provided

Gearbox: PRM 250

Electrical Charging & Batteries:

Generator: Mastervolt 6kva, Isuzu based, 1500 rpm, 1800 hrs use, in cocoon, indirect raw water cooled, water separator silenced. Fitted with Speedseal impeller cover for quick & easy impeller replacement

Start battery linked via isolator to engine start battery. Remote control panel in galley. Comprehensive service log provided

Engine alternator: 12 volt, 40 amp

Domestic alternator: 24 volt, 175 amp Leece Neville with Sterling advanced regulator (switchable). Charges the domestic batteries and the thruster/winch batteries in the bow (via a relay).

Batteries: Domestic — 450ah @ 24v. Rolls wet lead acid, 4 x 6v in series located in bilges below galley fridge (vented to outside). New November 2014

- Engine start — Mastervolt 12v 160ah AGM. New 12/06/2019
- Generator start — Mastervolt 12v 55ah AGM. New 18/11/2019
- Thruster/winch — Mastervolt 2 x 12v 225ah in series (24v) AGM. New 04/12/2019

Solar & Chargers

Solar:

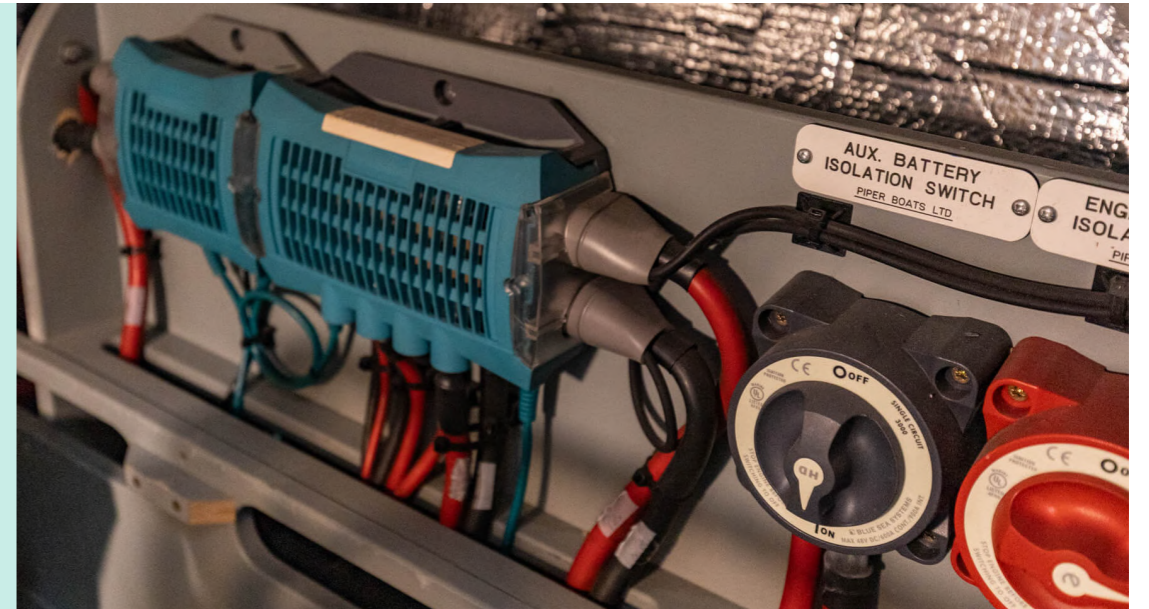
- 2 x 250w Panasonic HIT panels (500w array located on the wheelhouse roof)
- Tracer 20 amp MPPT controller. Switchable between domestic and start batteries

Chargers:

- Mastervolt Easycharge 10amp trickle charger for start batteries. Switchable between engine start with generator start or both.
- Mastervolt Mass Combi 24/120/4000. Fully configurable 4kw inverter 120amp charger @ 24v
- Mastervolt Chargemaster 24/40-3. Fully configurable 40amp charger for bow thruster/winch batteries

Domestic Electrics:

- All Mastervolt devices (with the exception of the trickle charger) are controlled/monitored via the MasterView touch panel in the galley. A MasterBus network links the devices and a USB interface



Mastervolt devices present on the network:

- GI 3.5 — 16amp Galvanic Isolator (for shore 240v)
- Mass Combi 24/120/4000 Inverter/Charger
- ChargeMaster 24/40-3 — Thruster/Winchcharger
- MasterShunt — monitoring battery usage/charging
- DCS Distribution - fused circuits to all 24v devices
- MasterView touch panel — For controlling/monitoring status of devices.
- USB interface

Galley Control Panel

Aside from engine and navigation systems, everything else is controlled and monitored from the galley control panel

- Below the MasterView screen is a digital voltmeter: provides domestic battery voltage at a glance & can be switched to show engine start battery voltage using the rocker switch to its right. There is a red neon lamp which indicates when 230v is present whether shore power or via the generator (not lit when on inverted power)
- Bottom centre is a JVC vehicle type DAB radio/CD player: The rear speakers are in the wheelhouse whilst the front speakers are in the saloon. The same model radio is in the bedroom with speakers in the bedroom and bathroom. Either radio can be operated by a remote control
- Top centre is the generator control panel: This is used to turn the generator on or off and to monitor the load. It can also be used to check start battery voltage, when next service is due or to configure the generator for automatic operation
- Next right are four tank gauges: These read zero unless operated by pressing the button at the bottom of the switch bank to the right:

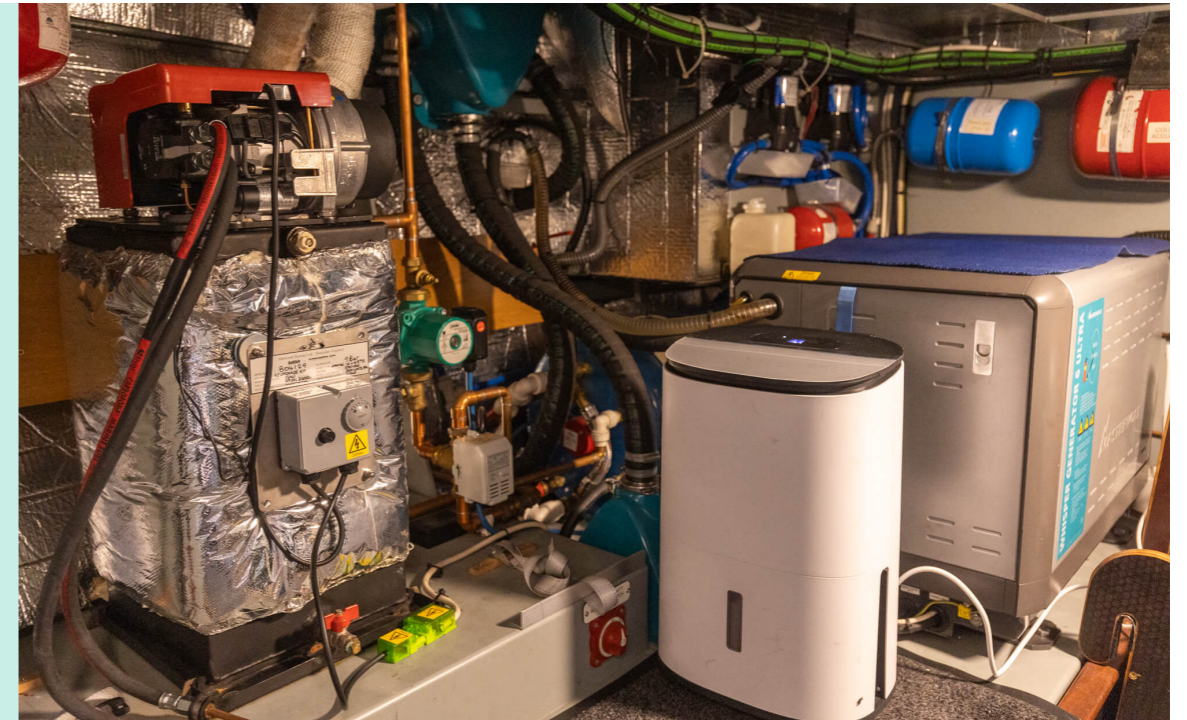


1. **Water** — Approx 1800 litres — in the bow
 2. **Waste** — Approx 1000 litres — Under saloon/ bathroom floor
This tank is pumped out via a skin fitting in the starboard deck. It can also be discharged to sea
 3. **Stove (diesel)** — Approx 225 litres — behind panel by stairs
 4. **Main (diesel)** — Approx 1000 litres — under galley/saloon floor
- On the far right is the 24v switch/trip panel controlling lights, pumps, fridge/freezer, toilet and tank gauges

Heating, Hot Water, Glazing & Insulation

High Spec well thought out multifunctional systems ensure comfort for all year round for living onboard both on static mooring & when cruising. The double glazing, insulation and dehumidifiers ensure a dry boat

- **Central Heating:** Harworth pressure jet, diesel-fuelled domestic boiler to radiators & calorifier. Automated control via a standard domestic central heating controller and programmable room thermostat
- **Secondary Heating:** Harworth B1 diesel-fuelled stove in saloon. Gravity fed from tank in starboard side cabinetry. Flue is double skinned and topped with an anti-downdraught cowl
- **Hot Water:** from the calorifier — heated via the central heating system, the main engine when cruising or a 1kw immersion heater (rarely MasterView screen is a digital voltmeter provides domestic battery voltage at a glance & can be switched to show engine start battery voltage using the rocker switch to its right. There is a red neon lamp which indicates when 230v is present whether shore power or via the generator (not lit when on inverted power)



Glazing & Insulation:

- All appropriate steelwork was generously spray foamed during the build
- All windows (with the exception of the escape hatch above the bed) are double glazed. Floors comprise a honeycomb cavity layer between plywood layers
- The saloon, bathroom and bedroom floors are thickly carpeted and have a dense foam underlay. The galley is carpeted with a removable rubber backed nylon carpet over vinyl flooring



Contact Information

Agent - Simon Lewis | Rivercation Sales

Tel: +44 (0)7860 235544 (WhatsApp available)

Email: info@rivercation.com